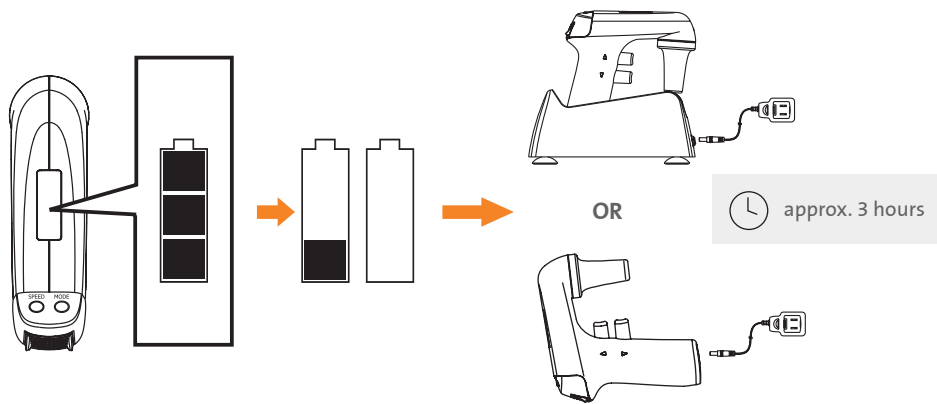


# Corning® Stripettor® Pro Pipet Controller

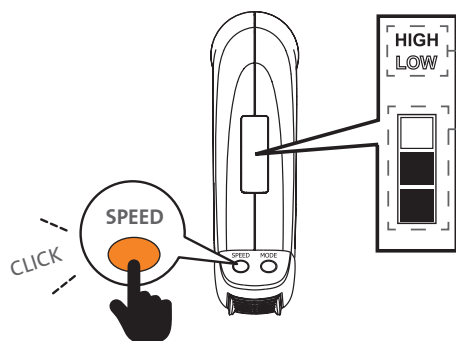
## Quick Start Guide

CORNING

### Battery Charge



### Speed Setting



#### Level (LOW-HIGH)

Click SPEED to change

#### Speed value (1-3 bars)

- Hold SPEED for 3 sec.
- Press SPEED to change
- Hold SPEED for 3 sec. to accept

The speed can be controlled by pressing the trigger buttons as well.

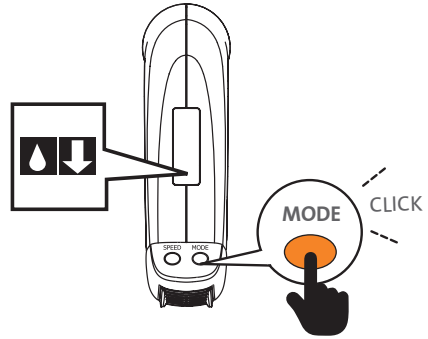
Approximated time of aspirating 25 mL of distilled water.

Speed level	LOW	HIGH
	L1 6.3 s	H1 4.4 s
Speed value	L2 5.6 s	H2 3.8 s
	L3 5.0 s	H3 3.1 s

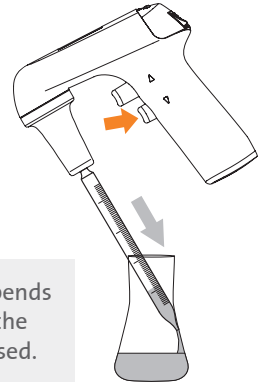
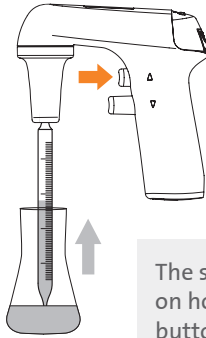
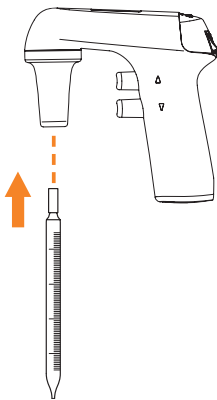
## Mode Control



Click MODE to change between Gravity (drop) and Blow out (arrow) mode



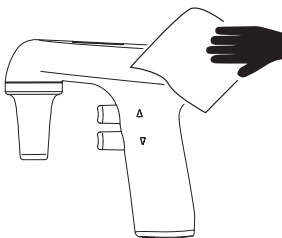
## Aspirating and Dispensing



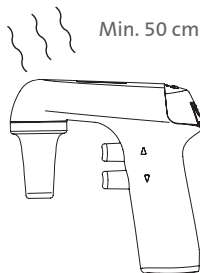
The speed depends on how deep the button is pressed.

## Maintenance

✓ Isopropyl alcohol



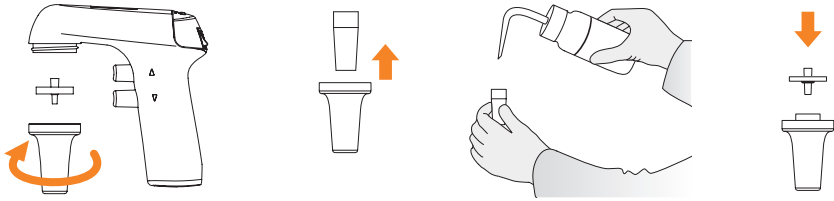
✓ UV sterilization



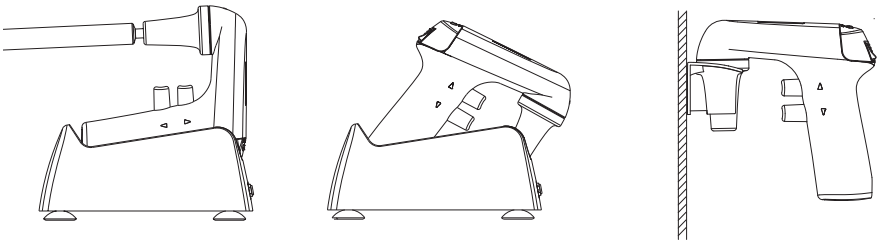
✓ Autoclave

**ONLY**  
121°C for 15 min.  
121°C for 20 min.

## Filter Replacement



## Storage



## Safety Information



**WARNING: Risk of injury**

**CAUTION** Risk of damage to the device or errors in pipetting of liquids.

Before starting the work with the pipet controller every user should read the operating instructions carefully.

### CAUTION:

- Using the device inconsistently with the operating instructions may result in damaging the device.
- The device should be serviced only at an authorized service center, otherwise the manufacturer will be relieved from any liability under the warranty.
- Only original spare parts and accessories, recommended by the manufacturer, shall be used.
- Only the original charger, supplied by the manufacturer, shall be used for charging the battery.
- In case of incorrect functioning of the pipet controller, work shall be stopped. The device shall be cleaned according to section 9 and sent for repair to an authorized service center.
- In the case of mechanical damage to the casing, the device shall be immediately sent for repair to an authorized service center.
- The use of excessive force during work shall be avoided.



#### WARNING:

- During the work with the pipet controller general safety regulations regarding risks related with laboratory work should be observed. Protective clothing, goggles, and gloves should be worn.
- The pipet controller shall be used only for measuring liquids in conditions specified by the manufacturer, which are limited due to the chemical and mechanical resistance of the device, as well as the user safety.
- The information and instructions provided by the manufacturers of the reagents must be observed.

**NOTE:** The pipet controller is equipped with liquid vapors exhaustion system which protects against corrosion to ensure long instrument life.

---

### Equipment Disposal



According to Directive 2012/19/EU of the European Parliament and of the Council of 4 July 2012 on waste electrical and electronic equipment (WEEE), this product is marked with the crossed-out wheeled bin and must not be disposed of with domestic waste.



Consequently, the buyer shall follow the instructions for reuse and recycling of waste electronic and electrical equipment (WEEE) provided with the products and available at [www.corning.com/weee](http://www.corning.com/weee).

---

To access the Instruction Manual scan the QR code or visit [www.corning.com/resources](http://www.corning.com/resources)



# CORNING

For additional product or technical information, visit [www.corning.com/lifesciences](http://www.corning.com/lifesciences) or call 800.492.1110. Outside the United States, call +1.978.442.2200.