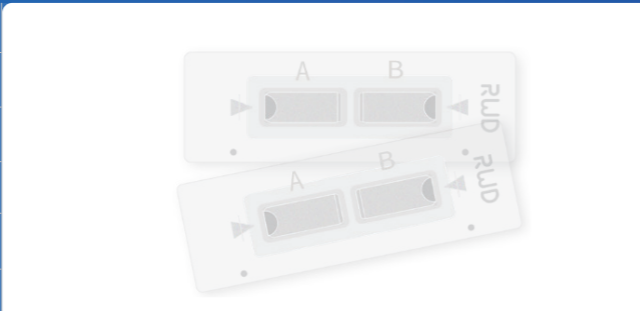



Accessories and consumables

DS-50 Disposable slide is composed of two independent counting chambers.

- One-piece cover plate, no cover glass required
- Balanced pressure design to ensure the uniformity of sample
- No manual cleaning required
- loadingIndependent and easy-to-use packaging, to ensure the
- Disposable design to avoid biological safety hazards
- repeatability of the experiment

Model	DS-50	
Chamber volume	10 μ L	
Number of chambers	2	
Dimensions of slide	75*25*1.7mm	
Dimensions of chamber	16.6*6*0.1mm	
Package	50pcs/box	

Detachable modular FL cube, optional dual fluorescence channels.

FL Cube	Excitation	Emission	General Dyes	
FL Cube-01	375/28nm	460/50nm	DAPI, Hoechst, BFP	
FL Cube-02	480/30nm	535/40nm	Acridine Orange(AO), Calcein-AM, Alexa fluor 488, SYBR Green, FITC, GFP	
FL Cube-03	540/25nm	620/60nm	Propidium Iodide(PI), DsRed, dTomato, RFP	

Order Information

Cat No.	Product Description
C100-Pro	Automated Cell Counter (BF + FL)
FL Cube-01	○ (Ex : 375/28nm ; Em: 460/50nm)
FL Cube-02	● (Ex : 480/30nm ; Em: 535/40nm)
FL Cube-03	● (Ex : 540/25nm ; Em: 620/60nm)
DS-50	Disposable Slide (50 pcs/box)

RWD Life Science Co.,Ltd

Add: 19-20/F, Building 7A, Shenzhen International Innovation Valley, Dashi 1stRoad, Nanshan District, Shenzhen, Guangdong, P.R. China E-mail: rwd@rwdstco.com

RWD Life Science Inc.

Tel: (858)900-5879 Support: service@rwdls.com Web: www.rwdstco.com

RWD | 瑞沃德

Automated Cell Counter

C100-Pro



RWD Automated Cell Counter adopts Trypan Blue staining method, intelligent image recognition and advanced optical imaging technology to achieve accurate and automatic cell analysis. The algorithm can identify both live and dead cells within 9 seconds. Information such as cell counts, viability, diameter can be obtained by just one-click. With fluorescence cube, C100-Pro can display images in BF and FL channels simultaneously and clearly present cell counts and cell morphology.

In order to meet the needs of cell therapy and biopharma, the data management and software system of C100-Pro fully conforms to FDA 21 CFR Part 11. It is an optimal device for cell analysis in cell therapy, biopharmaceutical, immunology and vaccine development, tumor research, stem cell and metabolism research.

Ⓡ FDA 21 CFR Part11 compliance

- Ensuring data security with account login and account permissions setting
- Ensuring data integrity with electronic signature and electronic recording

Ⓡ User-friendly

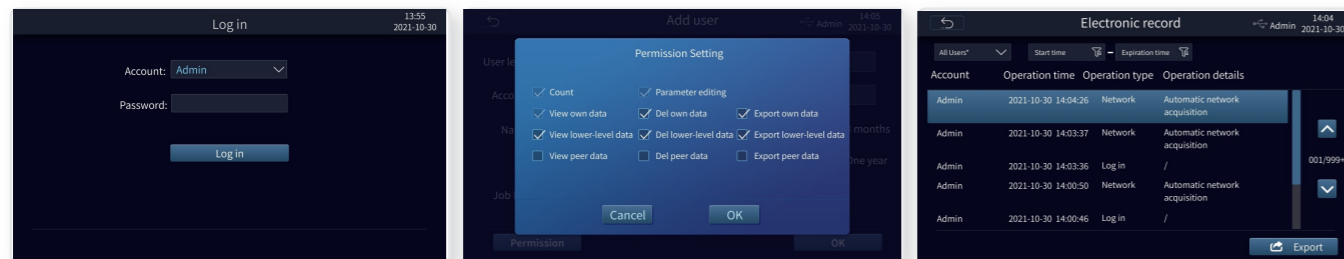
- Up to 1000 counting results can be stored
- Data transmission via LAN and server
- Removable modular FL cubes allow easy switches among various scenes
- Compact size fits into different placements

Ⓡ High accuracy

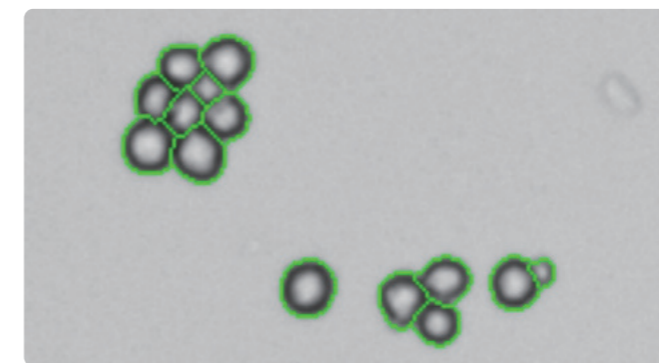
- Self-developed algorithm can identify clustered cells
- Intelligent cell marks ensure precise cell recognition
- Low autofluorescence and high-transmit filter enable clear imaging

Ⓡ Time-saving

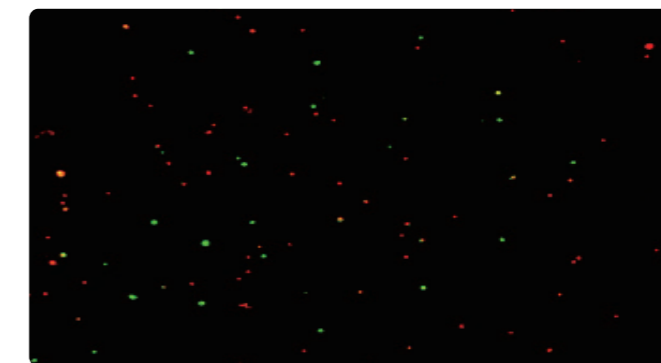
- Autofocus and auto exposure
- Powerful computing capability ensures high efficiency



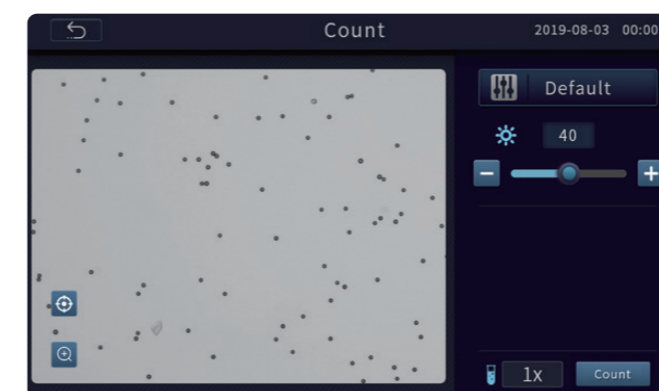
🔬 Operation interface



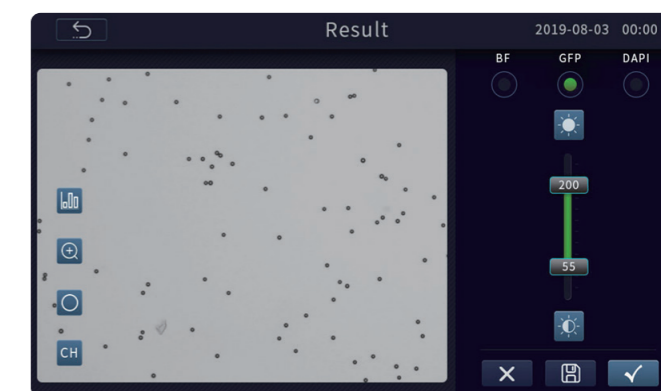
Clustered cell recognition algorithm



Clear fluorescence imaging



Pre-dilution calculator



User defined profile

🔬 Technical Parameters

Parameters	Description
Model	C100-Pro
Optional fluorescence	<ul style="list-style-type: none"> ● (Ex : 375/28nm ; Em: 460/50nm) ● (Ex : 480/30nm ; Em: 535/40nm) ● (Ex : 540/25nm ; Em: 620/60nm)
Amplification Factor	2.5×, 5.0 Megapixel
Focus Method	Manual focusing & Autofocusing
Counting Area	2.15 mm×1.62 mm
Cell Type	Cell lines, stem cells, primary cells, pollens, beer yeast
Cell Size Range	4-60 μm (Optimal: 7-60 μm)
Cell Concentration Range	10 ⁴ -10 ⁷ cells/mL
Cell counting Time	Less than 9s
Historical Data Storage	1000 counting reports and images at most
Languages	Chinese and English
Dimensions	212 (W)* 264 (H)* 165 (D)mm
Weight	~3.5 kg

🔬 Application field

