

From Eye to Insight

**Leica**  
MICROSYSTEMS

# Mateo TL

Digital transmitted light inverted microscope for cell culture



**Mateo TL makes the process of cell culture checks effortless for every team member, with intuitive setup and use.**

It improves reproducibility for your experiments through objective confluency evaluation across individuals or experiments.

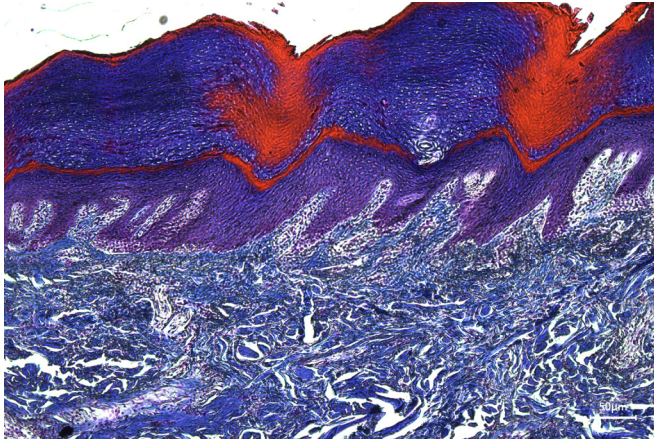
Benefits:

- > Simple to use, also for non-experts
- > Go from setup to first image in under 1 minute
- > One common criterion for consistent confluency measurements
- > Enhance your team's comfort

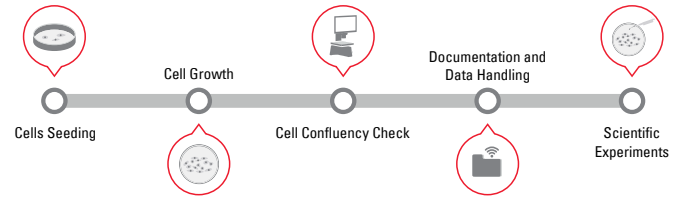
**Simple to use, also for non-experts**

Empower your entire team to observe and take images of samples easily and intuitively,

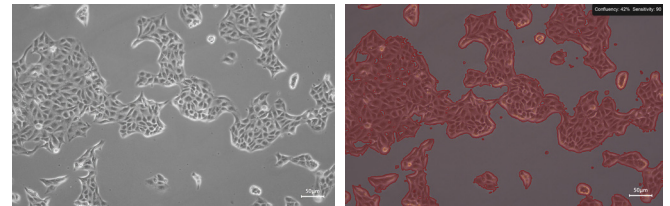
- > All lab members, regardless of expertise, can set up contrasting methods correctly using the interactive assisted contrast setup feature.
- > Observe and take images of samples easily with the intuitive and user-friendly software interface.
- > Mateo TL eases the training burden on technicians, supervisors, and senior researchers.



BF Stained Skin Section 20x



Confluency Check Workflow with Mateo TL



Phase-contrast image of a MDCK-cell culture and its respective confluency measured by Mateo TL.

## Technical specifications

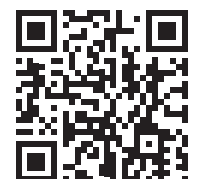
### Mateo TL base configuration

Light source LED	LED
Contrast methods	Transmitted light (brightfield and phase contrast)
Condenser	S40/0.45 condenser, working distance 50 mm
Phase turret	Encoded 3-position turret (BF, PH0, PH1)
Objective nosepiece	Encoded 4-position nosepiece
Preinstalled objectives	HI PLAN 4x /0.10 PH0   HI PLAN I 10x /0.22 PH1
Stage	Fixed stage (L*W) 262 mm x 212 mm
Focusing	Coarse and fine focusing, travel range 7 mm, min. adjustment 2 µm
Camera	Integrated CMOS, 6 megapixel color camera, sensor size 1 / 1.8", pixel dimensions 2.4 µm x 2.4 µm, sensor format H: 3072 px; V: 2048 px
Software	Stand-alone operating system. PC is not required.
Image output	JPEG and TIFF
Display	Color monitor with adjustable tilt, 15.6 inch, 1920 pixels x 1080 pixels
Onboard storage	Total storage 16 GB (Approximately 9 GB for the operating system and 7 GB for storing images and logfiles)
USB ports	1x USB 3.0 and 2x USB 2.0
Data transfer	USB or WIFI connection to smart device (optional)
Dimension (depth x width x height)	Monitor in display position: 310 mm x 376 mm x 530 mm   Monitor in folded position: 310 mm x 376 mm x 385 mm
Weight	11 kg
Transportation aid	Supporting handle on the back of microscope
Other items included in the base configuration	Wireless mouse, mouse pad, dust cover, power adaptor, power cord, user manual and quick start guide

### Optional accessories

Objectives	HI PLAN I 20x/0.30 PH1   HI PLAN I 40x/0.50 PH1
Object guide kit	Including > one attachable object guide > holding frame #1 for petri dishes 35 mm & 60 mm, glass slides, chambered slides and chambered coverglasses > holding frame #2 for multi-well plates
Software module	Confluency module
WIFI dongle	WIFI Dongle 2.4 GHZ for data transfer

CONNECT  
WITH US!



Leica Microsystems CMS GmbH | Ernst-Leitz-Strasse 17-37 | D-35578 Wetzlar (Germany)

Tel. +49 (0) 6441 29-0 | F +49 (0) 6441 29-2599

[www.leica-microsystems.com](http://www.leica-microsystems.com)