

## SLS2040 12.5Litre Ultrasonic Bath

The SLS Lab Pro range of digital baths offer outstanding performance for use in scientific and laboratory applications, chiropody, veterinary and many other professional environments.

Incorporating Frequency Leap Technology, homogenous cavitation activity is generated throughout the ultrasonic bath reducing dead spots and standing waves. This provides a more consistent scrubbing action for excellent results.

The SLS2040 is a 12.5Litre heated, digital ultrasonic bath.

The menu driven control panel allows simple adjustment of cycle time (0 to 99 minutes), temperature (ambient to 70°C), ultrasonic power and frequency mode for precise and accurate processing.

Combining features such as degas mode, fluid level sensor and a memory card port, the SLS2040 offers repeatable and traceable cleaning performance with consistent cleaning results every time.



Specifications are subject to change for continual improvements

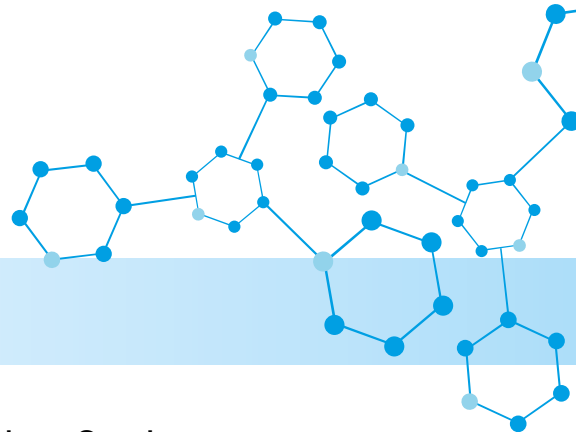


**LAB  
PRO**



Made in Britain





## SPECIFICATIONS

Construction Case	304 Stainless Steel
Construction Tank	304 Stainless Steel
Control	Digital LCD
Overall Dimensions	345 x 435 x 365mm (WxDxH)
Tank Dimensions	300 x 240 x 200mm (WxDxH)
Internal Basket Dimensions	260 x 210 x 160mm (WxDxH)
Maximum Capacity	14Litres
Working Capacity	12.5Litres
Ultrasonic Power	200W
Ultrasonic Power (per litre)	16W/Litre
Operating Frequency	32 – 38kHz <i>Frequency Leap</i>
Maximum Heating Capacity	Ambient - 70°C
Heater Power	300W
Timer	0 – 99 minutes
Mains Connection	230VAC
Drain Outlet	½" BSP valve*
Lid	ABS Plastic
Basket	304 Stainless Steel
Gross Weight (inc. lid, basket & packaging)	11.5kg
Net Weight	10kg
Warranty	3 Years

\*Drain is located at bottom right at the back of the machine

For more information on these products contact: