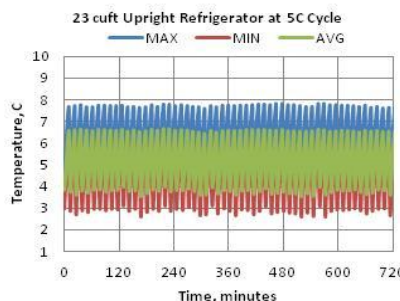
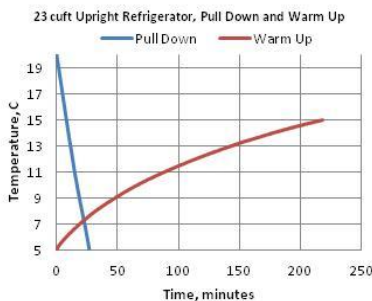




**Technical Data Sheet**  
**Thermo High Performance General Purpose Refrigerator**  
 MODEL RELEASE - 1  
 Thermo Fisher Scientific, Asheville, North Carolina

Specifications	Model Number
	TSX2305SV
	Application, Rating and Electrical Data
Application	General Purpose (non-flammable) Refrigerator
Storage Volume	650 Liters/23 Cubic Feet
Factory Temperature Setpoint	5°C
Temperature Setpoint Range	3°C to 7°C
Electrical Power / Rated Current	208-230V 50/60 Hz 1 Phase / 2.3A
Building Supply Rating	15.0A dedicated non-GFCI grounded circuit. Protected by circuit breaker rated for inductive loads
Power Plug/Power Cord Length	16 Amp (CEE 7/7) / 3.048 Meters (10 feet)
Agency Listings	UL,cUL,CE
Indoor/Outdoor Usage	Indoor Use Only
Application Environment	Non-Corrosive, Non-Flammable, Non-Explosive, Good Air Ventilation
Ambient Operating Temperature	15° C - 32° C (60° F - 90° F)
Refrigeration Configuration	
Refrigeration System	Vapor compression system
Compressor / Quantity / Capacity*	Hermetic Variable Capacity Compressor / 1 / 286W
Condenser Type/ Quantity	Microchannel and Forced-Air Cooled / 1
Expansion Device	Capillary Tube
Evaporator Type / Defrost Method	Forced Air Evaporator Coil / Automatic Defrost
Refrigerant Charge/Flammability	Environmentally Safe R290 / Flammable
Controller/Electrical System Configuration and Features	
Controller Level	Eye Level
Power Switch	Keyed Off-On - Alarm
Controller Type	IntrLogic Control System: Digital display, Graphic thermometer, Automatic defrost system
Setpoint Security / Programmable	Yes / Yes
Compressor Safe Guard	Current Protection
Control Sensor	Single RTD (1000 ohm shielded Platinum RTD)
Remote Alarm Terminals	Standard
Adjustable Warm/Cold Alarms	Fully Adjustable
Power Failure Alarm	Standard
Electronic Chart Recorder	Optional
Dimensions and Construction	
Interior Dimensions (H x D x W)	1473 H x 725 D x 610 W mm (58 H x 28.6 D x 24 W in.)
Exterior Dimensions (H x D x W)	1994 H x 945 D x 711 W mm (78.5 H x 37.2 D x 28 W in.)
Insulation	5.08 cm (2.0") High Density HFC-blown Polyurethane Foam in cabinet
Door Perimeter Heater	Yes
Shelves / Capacity	(4) Adjustable Wire Shelves / Max. Cap. per Shelf: 45 kg (100 lbs.)
All-Direction Casters	Yes
Ship Weight	192 kg / 424 lb

**Typical Performance Characteristics in 20° C Ambient**



Test Unit/Serial Number or MSO Number:	19490-BA-T17
Cabinet Load:	Unloaded
Average Cabinet Temp at 5C Cycle (C):	5.2
Peak Variation from Setpoint (C):	+2.8 / -2.4
Uniformity (C):	1.7
Stability (C):	3.1
1-min Door Opening Recovery to 5C (min):	1
Duty Cycle at 5C (%):	23
Cycle (on/off) rate at 5C (min):	3 / 10
Energy Consumption (kw-hr/day):	3.8
Heat Rejection Rate (btu/hr):	537
Pull Down Time (to 5C) (min):	27
Warm Up Time (5C to 15C) (min):	219
Sound (dBA):	52

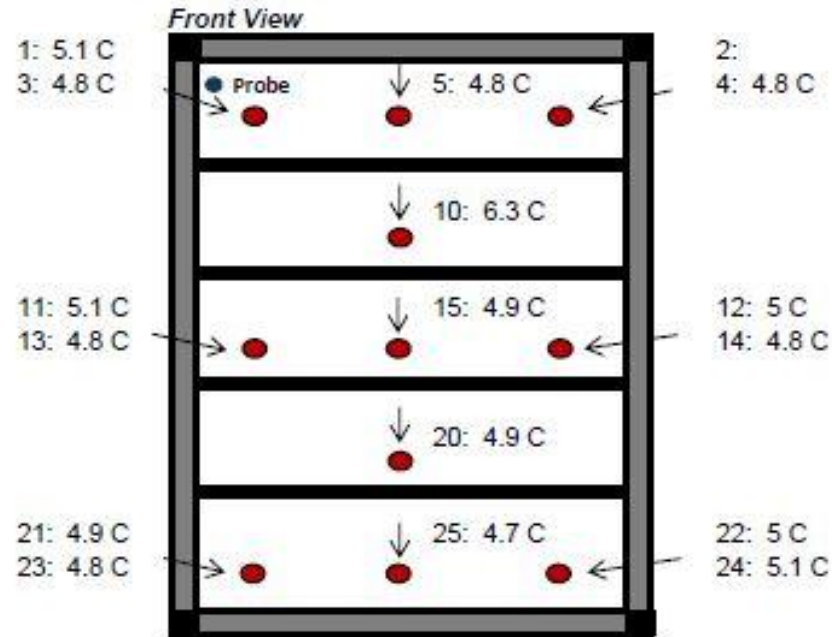
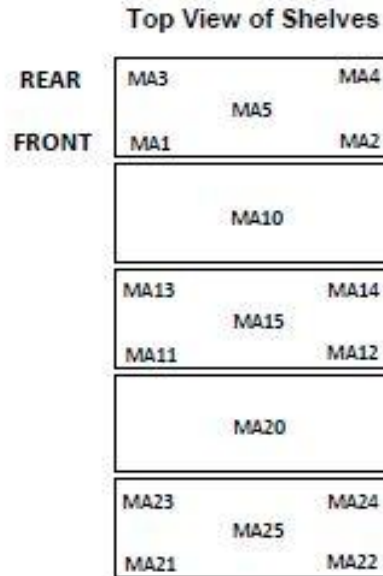
- Performance is nominal and individual units may vary.
- Freezer performance will differ due to product amount, product size and operating conditions.
- Continuous product enhancements may, without notice, result in amendments or omissions to this specification. Thermo Scientific cannot accept responsibility for damage, injury, loss or expenses resulting from misapplication of the information herein.

\* Manufacturer measured compressor capacity taken at -35C/40C(evap./cond.temp) at 4500 rpm condition.



Typical Cabinet Temperature Map  
Refrigerator 23 cuft Unit, 4 Inner-Shelves + Base, Single Outer Door

Temperatures are averages during > 12 hours of cycle after reaching setpoint of 5 C



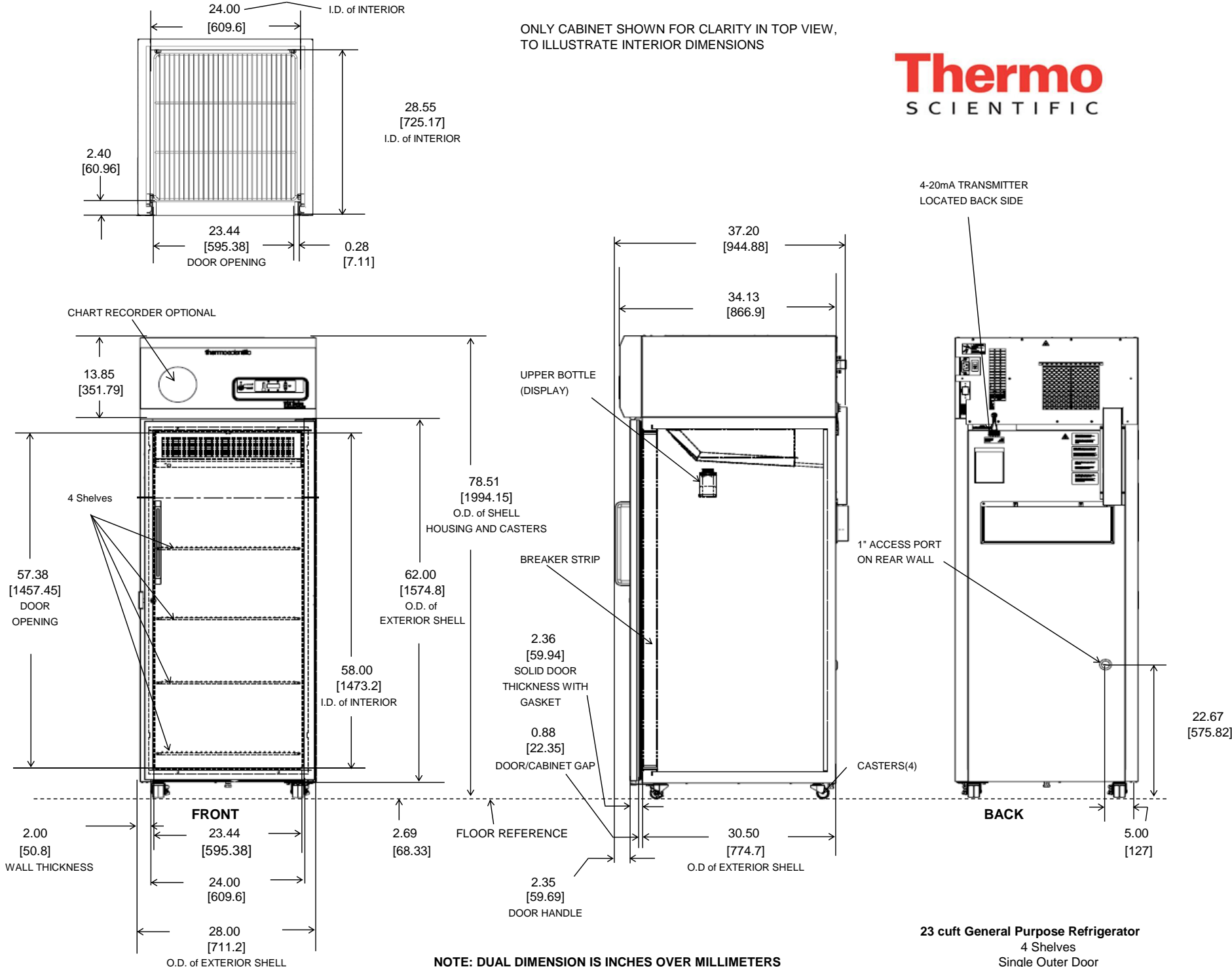
Cabinet Average: 5.2 C  
Probe Average: 5 C  
Peak Variation: +2.8 C / -2.4 C

19490-BA-T17

	MA1	MA2	MA3	MA4	MA5	MA10	MA11	MA12	MA13
Avg	5.1		4.8	4.8	4.8	6.3	5.1	5.0	4.8
Max	6.5		6.3	6.3	6.3	7.8	6.5	6.4	6.4
Min	3.7		3.3	3.2	3.2	4.6	3.5	3.5	2.9

	MA14	MA15	MA20	MA21	MA22	MA23	MA24	MA25
Avg	4.8	4.9	4.9	4.9	5.0	4.8	5.1	4.7
Max	6.4	6.3	6.3	6.5	6.5	6.4	6.4	6.5
Min	2.9	3.5	3.3	3.1	3.3	3.1	3.7	2.6

ONLY CABINET SHOWN FOR CLARITY IN TOP VIEW,  
TO ILLUSTRATE INTERIOR DIMENSIONS



**NOTE: DUAL DIMENSION IS INCHES OVER MILLIMETERS**  
DO NOT USE FOR ENGINEERING PURPOSES. SUBJECT TO CHANGE WITHOUT NOTICE.

**23 cu ft General Purpose Refrigerator**  
4 Shelves  
Single Outer Door  
Top Mount Controls